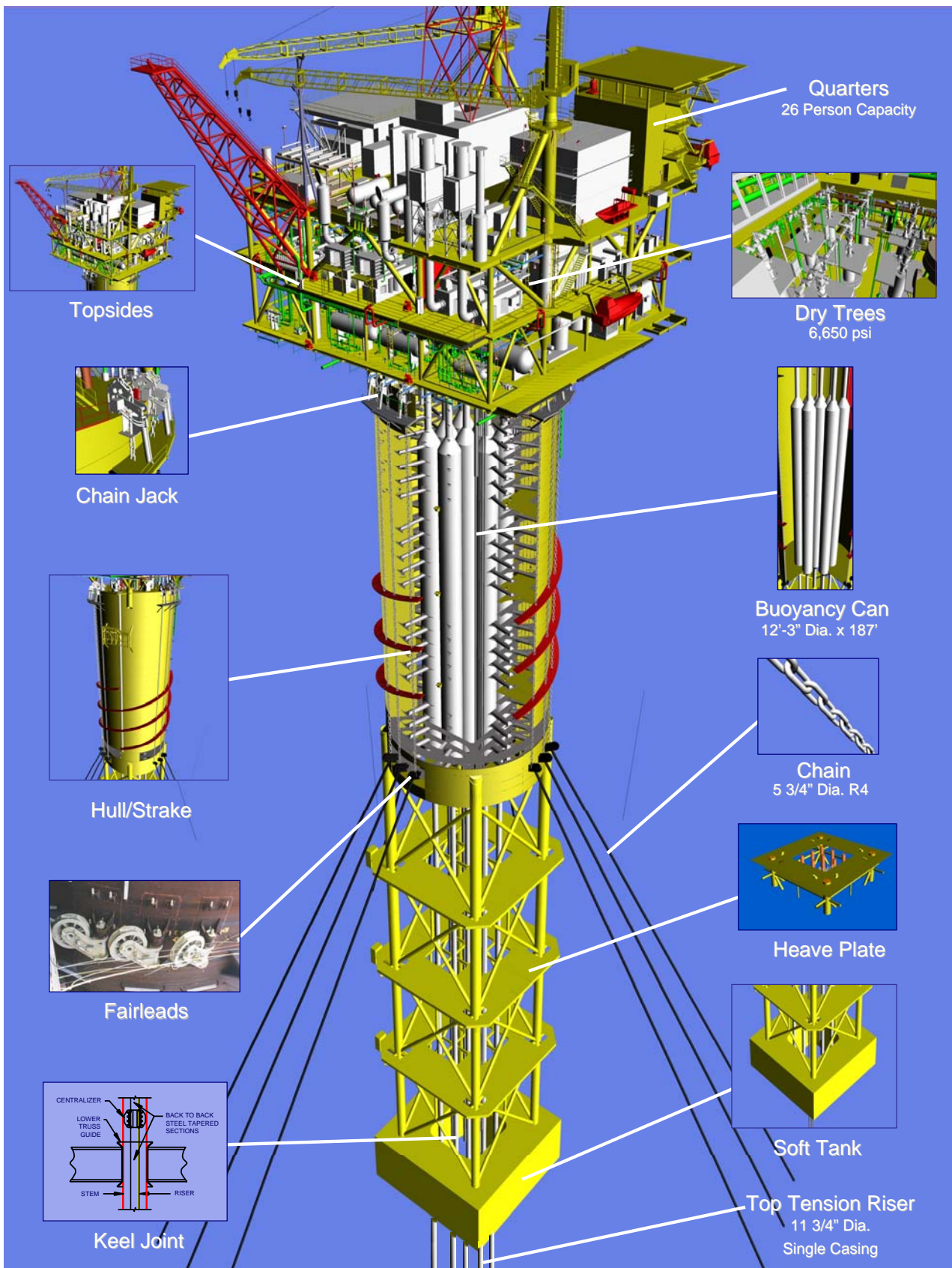


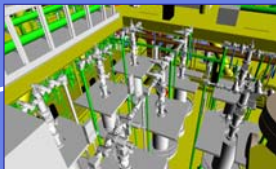
Oil Production 60,000 bpd
 Gas Production 60 MMscfd
 Produced Water 40,000 bpd
 Dry-Tree Production Well Risers 8 (6 predrilled)
 Export Pipeline Riser (SCR's) (1)14" Oil, (1)14" Gas
 Future Subsea (SCR's) (2)6", (2)10", (4)umbilicals
 Total Facility Payload (Max. Operating) 9,470 short tons



Hull Form
 Hull Diameter 94 feet
 Normal Operating Freeboard 50 feet
 Centerwell 42'x42'
 Overall Draft 536 feet
 Total Length 586 feet
 Number of Taut Catenary Lines 9
 Water Depth 5,610 ft.
 Piles Suction



Quarters
 26 Person Capacity



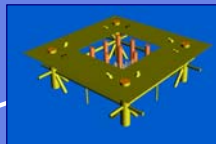
Dry Trees
 6,650 psi



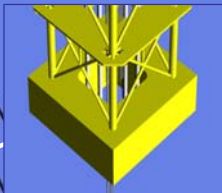
Buoyancy Can
 12'-3" Dia. x 187'



Chain
 5 3/4" Dia. R4



Heave Plate



Soft Tank

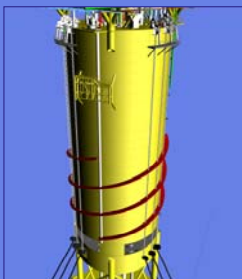
Top Tension Riser
 11 3/4" Dia.
 Single Casing



Topsides



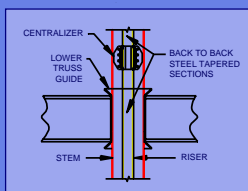
Chain Jack



Hull/Strake



Fairleads



Keel Joint

